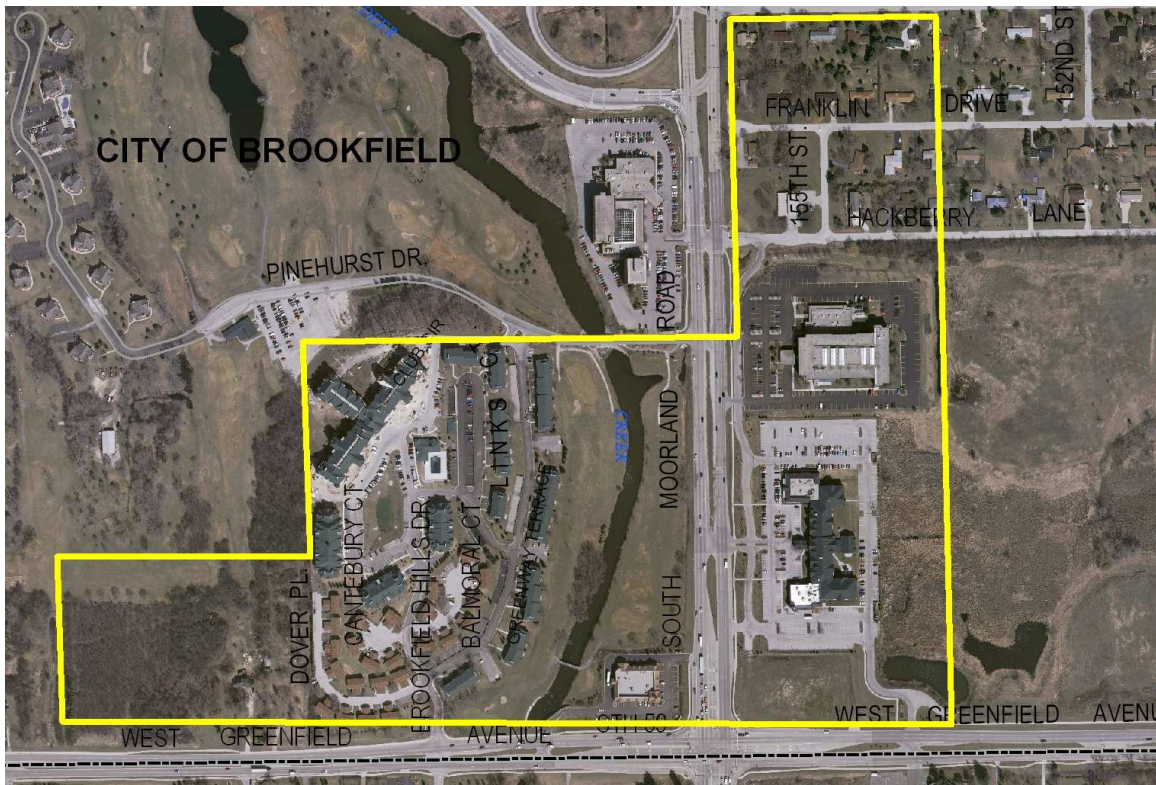


South Gateway Neighborhood Plan

The South Gateway Neighborhood Plan is one of ten Targeted Intervention Areas (TIAs) established in the *Brookfield Year 2020 Master Plan* that was identified as an area that will likely incur relatively high development pressure while simultaneously require special attention to the residential areas to the east. A planning process is now underway by Brookfield to create a community vision and strategy to insure this area develops and redevelops in an appropriate manner.



Preliminary Study Area

A citizen task force has been appointed that will review information provided by city staff and a consultant who is assessing market demand for the area. The task force will report later this year to the Plan Commission who will advise the Common Council on a final plan for the area.

The *2020 Plan* states that the South Gateway node is located as “the southern entrance to the City and should be developed as a primary gateway to the City”. Additionally, the planning process will examine and plan for market demand of commercial, hospitality and multifamily uses , identify options for the reuse of a city fire station site , balance future growth with preservation of existing residential neighborhoods and continue engineering analysis of public improvements such as streets and utilities.

Watch for updates in future newsletters or visit the city’s website @ www.brookfield.wi.us.